

The background of the slide is a dark, semi-transparent financial chart with green and yellow candlesticks and a blue line graph. A large, thick blue arrow curves from the bottom left towards the top right, pointing upwards. In the bottom right corner, there is a 3D model of a coronavirus particle, colored in red, orange, and grey. The title 'Recovery Tracker' is centered in a large, white, sans-serif font. Above the title, there is a small horizontal bar with a green segment on the left and an orange segment on the right. The date 'JULY 2022' is written in white, sans-serif font in the lower-left area. The footer contains the text 'ALEXANDER RESEARCH & CONSULTING' in white, sans-serif font. Various financial data points and terms like 'SELL' are visible in the background.

# Recovery Tracker

JULY 2022

## INTRODUCTION

To create a tool to track the economic recovery in Northern Colorado, we selected a set of indicators that represent critical aspects of the Larimer and Weld County economies, are based on data that is accessible in a useable format, and updated frequently with little lag time.

The selected indicators are updated at least monthly with no more than a two-month lag and are primarily available at the county level. They provide almost real-time insights about economic conditions and recovery status.

They address the following questions:

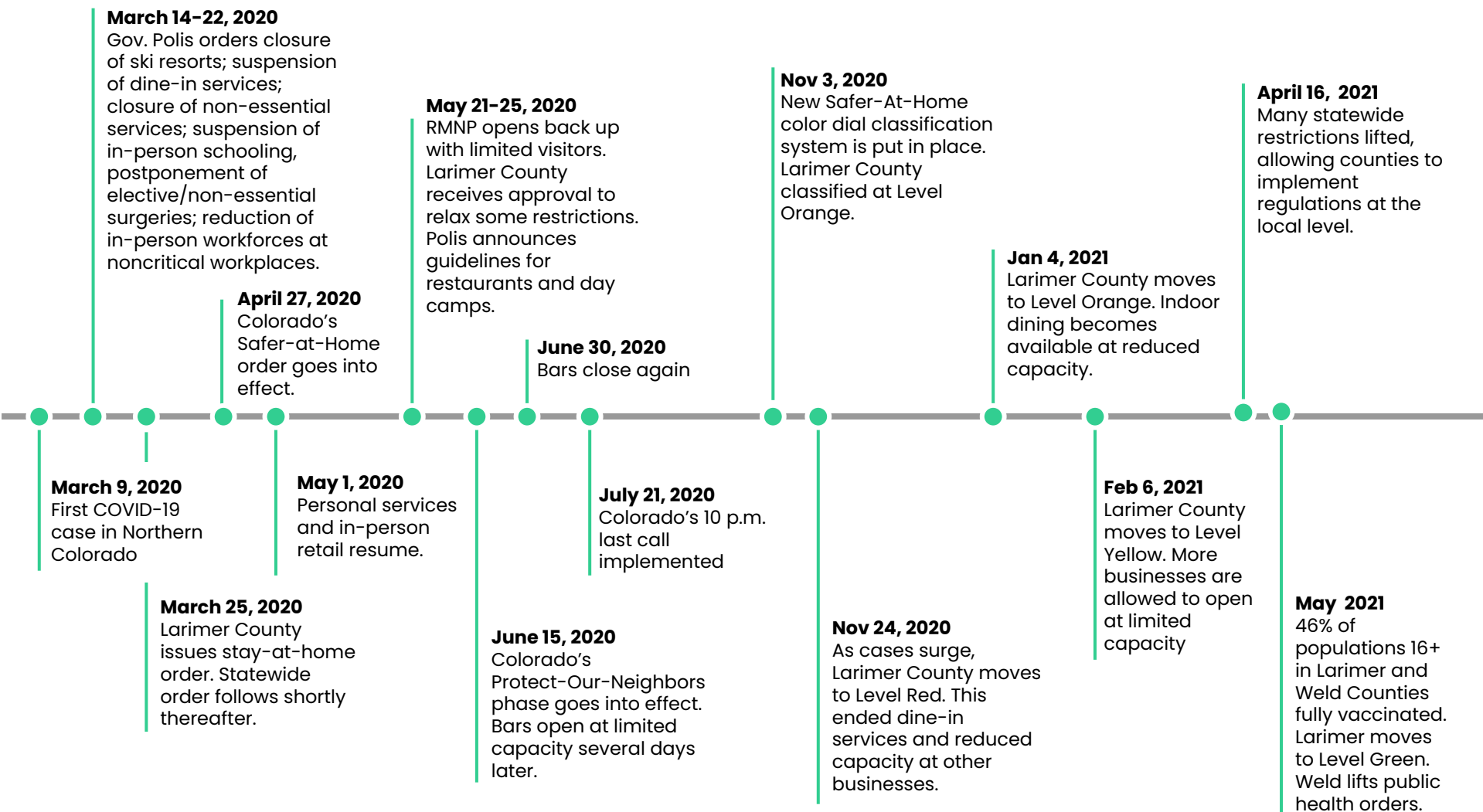
- Are residents engaged in engaged in the labor market and do they have jobs?
- Are regional businesses able to maintain their workforce? Are they hiring?
- Are consumers spending money in our economy?
- Are visitors coming back?
- Is our real estate market stable? Are businesses closing and leaving unoccupied commercial spaces?
- Is the construction industry active and purchasing materials to support future growth?

This list of indicators is not exhaustive, but does represent well-rounded measures that can signal areas of strength or weakness in the recovery from the economic shock induced by the COVID-19 Pandemic.



INDICATOR	STATUS	TREND
Unemployment Rate	High	↓
Labor Force	High	↑
Job Postings	High	↑
Nonfarm Employment	Mixed	↑
Bankruptcies	Low	↓
Retail Sales	High	↑
Mobility	Mixed	↑
Hotel Occupancy and Revenue	Mixed	↑
Visitors to Rocky Mountain NP	High	↑
Median Home Price	High	↑
Commercial Vacancy Rates	High	↔
Building Materials Use Tax	High	↑

# THE PANDEMIC AND BUSINESS CLOSURE TIMELINE IN NORTHERN COLORADO



## EMPLOYMENT | Unemployment Rate

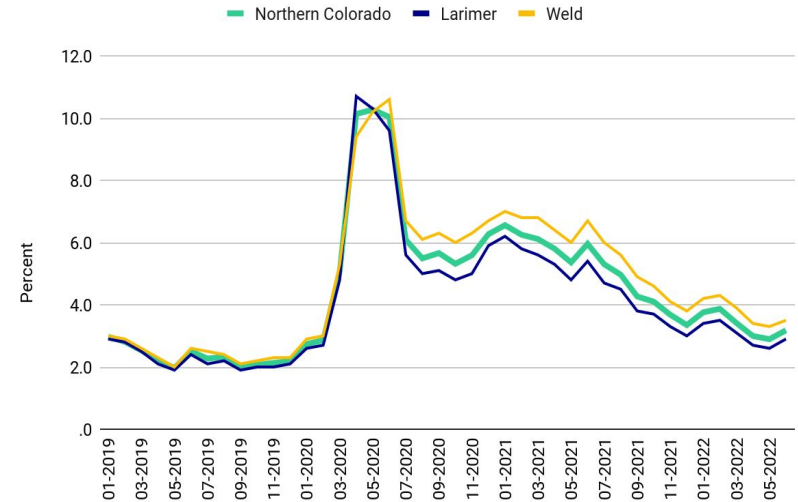
	CURRENT JUN 2022	COMPARISON TO 2019 AVERAGE	LOW	HIGH
Northern Colorado	3.2%	+0.8 percentage pts	2.7% Jan 2020	10.3% May 2020
Larimer	2.9%	+0.7 percentage pts	2.6% May 2022	10.7% Apr 2020
Weld	3.5%	+1.1 percentage pts	2.9% Jan 2020	10.6% Jun 2020

**What:** The unemployment rate measures the percent of people who are jobless, looking for a job, and available for work as a percent of the labor force. These estimates are derived from a national household survey.

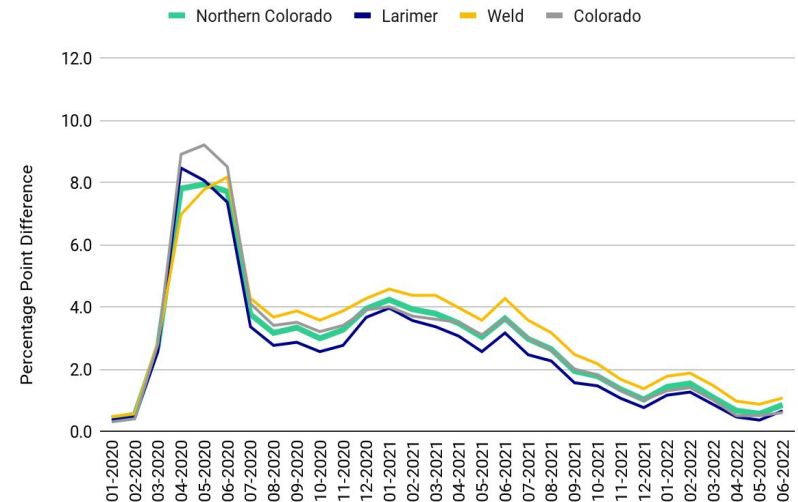
**Why:** The unemployment rate is an indicator of access to economic opportunity. High unemployment represents a loss of jobs and a loss of income, which impacts economic self-sufficiency and influences consumer expenditures.

**Summary:** While the unemployment rate peaked in Larimer County in April, it peaked in Weld County in June. After rising about 8 percentage points higher than the monthly average in 2019, unemployment steadily declined aside from periodic, seasonal upticks.

### Unemployment Rate



### Unemployment Rate: Difference from 2019 Monthly Average





## EMPLOYMENT | Civilian Labor Force

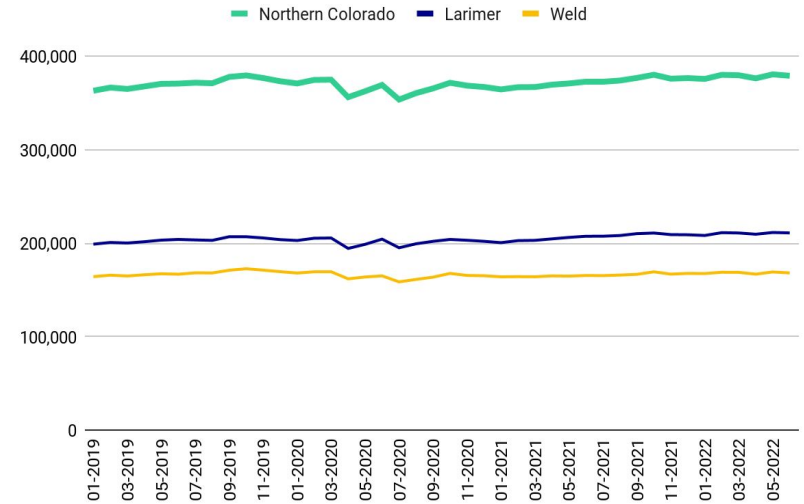
	CURRENT JUN 2022	COMPARISON TO 2019 AVG.	LOW	HIGH
Northern Colorado	378,901	+2.1%	353,467 Jul 2020	380,447 May 2022
Larimer	210,872	+3.8%	194,269 Apr 2020	211,663 May 2022
Weld	168,029	+0.1%	158,497 Jul 2020	169,314 Oct 2021

**What:** The labor force consists of the employed (people with jobs) and the unemployed (people who are jobless, looking for a job, and available for work).

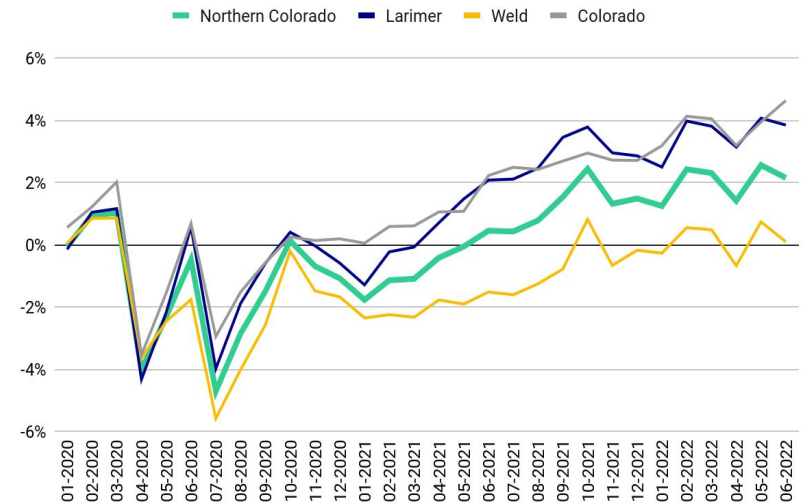
**Why:** Changes in the labor force can measure workers' desire and ability to work. During normal years, the labor force is fairly stable. However, during this pandemic, workers not only face increased uncertainty about their prospects of finding work but also must consider factors such as health risk, vulnerability, and childcare when deciding whether or not to participate in the labor force.

**Summary:** At the beginning of the pandemic, many workers dropped out of the labor force. Although workers re-entered in June 2020, the labor force contracted again later that summer as it does seasonally. By fall of 2020, the labor force had more or less recovered in Larimer County. In Weld County, the labor force was much slower to recover.

### Labor Force



### Labor Force: Percent Difference from 2019 Monthly Average



**Source:** US Bureau of Labor Statistics, Local Area Unemployment Statistics.

**Frequency:** monthly, 2-month delay

**Updated:** 08/03/2022

## EMPLOYMENT | Unique Job Postings

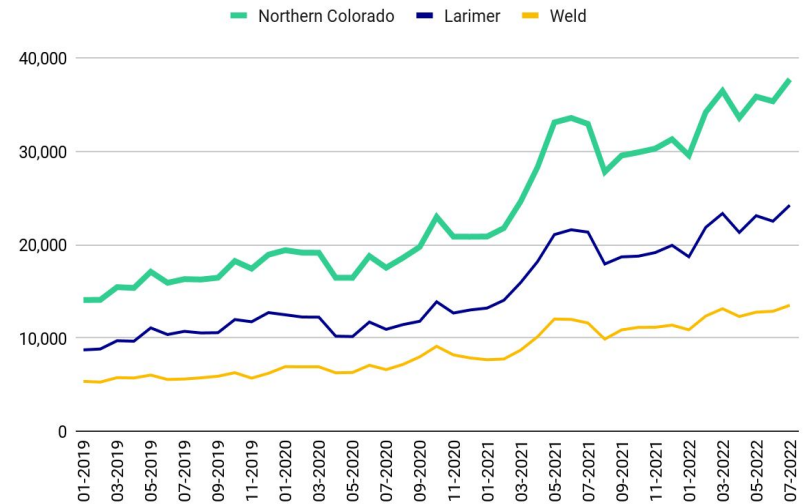
	CURRENT JUL 2022	COMPARISON TO 2019 AVERAGE	LOW	HIGH
Northern Colorado	37,701	+134.7%	16,507 May 2020	37,701 Jul 2022
Larimer	24,211	+131.5%	10,183 May 2020	24,211 Jul 2022
Weld	13,490	+129.7%	6,291 May 2020	13,490 Jul 2022

**What:** The job postings in this dataset are those considered to be unique and “active,” meaning they are currently available online and are open for applications.

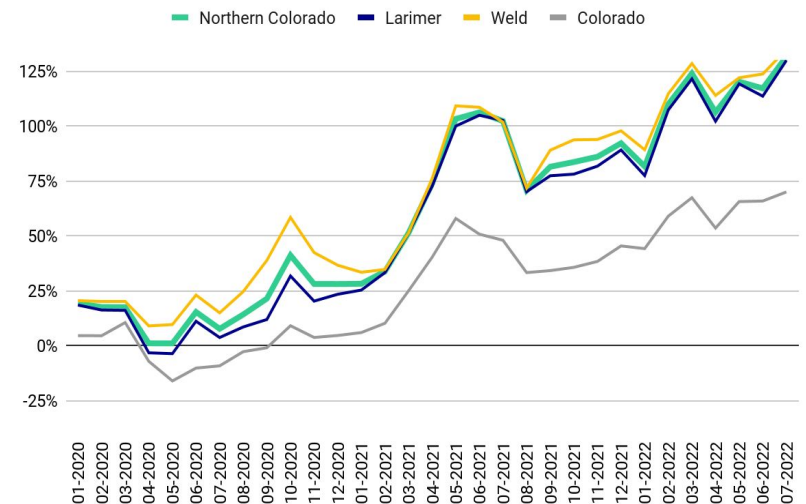
**Why:** Job postings are a leading indicator of emerging labor market trends. They are a measure of recruitment marketing by employers purportedly looking to fill job vacancies. Higher levels of job posting activity can be indicative of heightened hiring activity in a labor market and vice versa.

**Summary:** In May 2020, job posting activity bottomed out. Since then, posting activity has picked up dramatically, accelerating significantly in the first half 2021. Though there was a sharp decline in the late summer of 2021, posting activity has since continued to climb, accelerating again in early 2022.

### Unique Job Postings



### Job Postings: Percent Difference from 2019 Monthly Average



Source: Emsi.

Frequency: monthly, no delay

Updated: 08/03/2022

## EMPLOYMENT | Unique Job Postings per Unemployed Worker

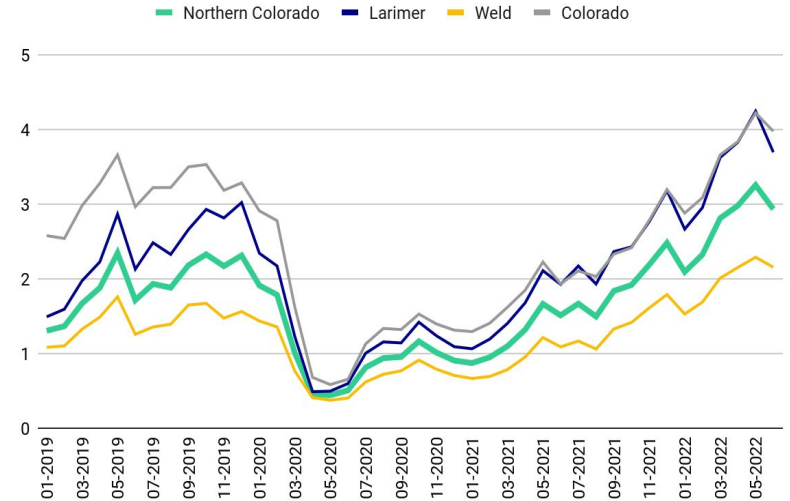
	CURRENT JUN 2022	COMPARISON TO 2019 AVERAGE	LOW	HIGH
Northern Colorado	2.9	+52.5%	0.4 May 2020	3.3 May 2022
Larimer	3.7	+55.5%	0.5 May 2020	4.3 May 2022
Weld	2.2	+51.1%	0.4 May 2020	2.3 May 2022

**What:** The job postings per unemployed worker is the number of unique active job postings divided by the number of workers who are not employed and actively seeking work.

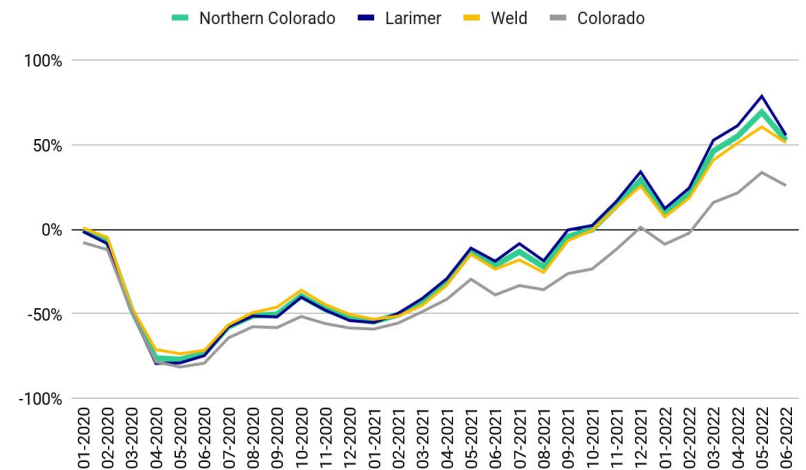
**Why:** Job postings per unemployed worker provides an indicator of the supply of available workers relative to the number of job openings.

**Summary:** In April 2020, the number of unemployed workers reached its peak, and in May 2020, job posting activity bottomed out. At that time, there were about two unemployed workers for every job posting. Since then, posting activity has rapidly increased and the number of unemployed workers has declined. Currently, in Northern Colorado, there are three job postings for every unemployed worker.

### Unique Job Postings per Unemployed Worker



### Job Postings per Unemployed Worker: Percent Difference from 2019 Monthly Average



**Source:** Emsi. US Bureau of Labor Statistics.

**Frequency:** monthly, no delay

**Updated:** 08/03/2022

## EMPLOYMENT | Total Nonfarm Employment

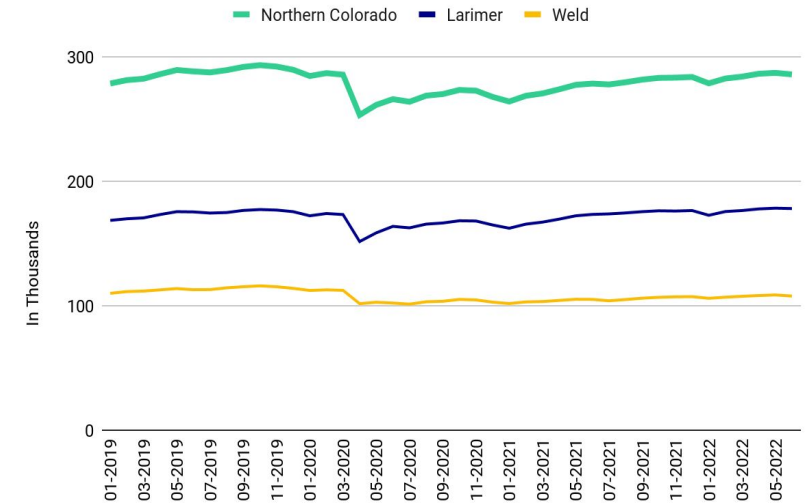
	CURRENT JUN 2022	COMPARISON TO 2019 AVERAGE	LOW	HIGH
Northern Colorado	285,900	-0.6%	253,100 Apr 2020	287,100 May 2020
Larimer	178,100	+2.3%	151,400 Apr 2020	178,400 May 2022
Weld	107,800	-4.9%	101,000 Jul 2020	112,800 Feb 2020

**What:** Total nonfarm employment is a measurement of the total number of workers. These estimates are provided monthly based on national survey of businesses and government agencies.

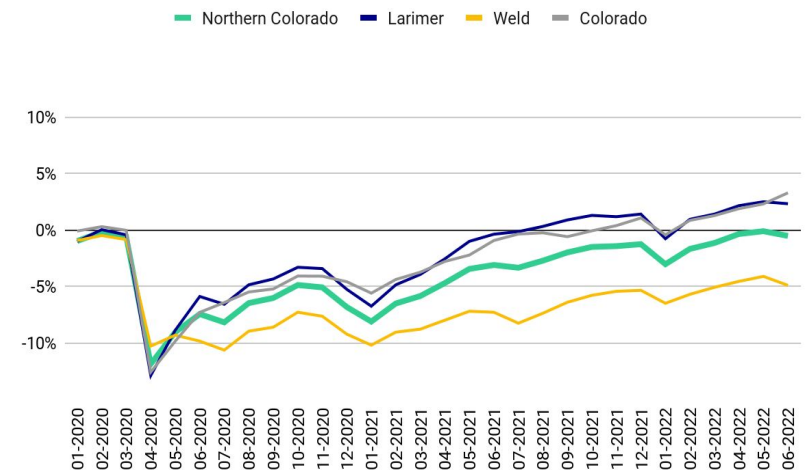
**Why:** This measure of employment is based on the place of work and provides insights into employment levels at employers based in Larimer and Weld Counties.

**Summary:** The economic shutdown in the spring of 2020 meant that employers in Northern Colorado shed almost 34,000 jobs, a drop of 12 percent. Since April, employers in Larimer and Weld Counties have recovered many of the jobs - Weld County at a slower rate. Larimer County recovered back to 2019 average employment in August 2021 and Northern Colorado recovered temporarily in May 2022 while Weld County employment is still more than 4.0 percent lower.

### Nonfarm Employment



### Nonfarm Employment: Percent Difference from 2019 Monthly Average



**Source:** US Bureau of Labor Statistics, Current Employment Statistics

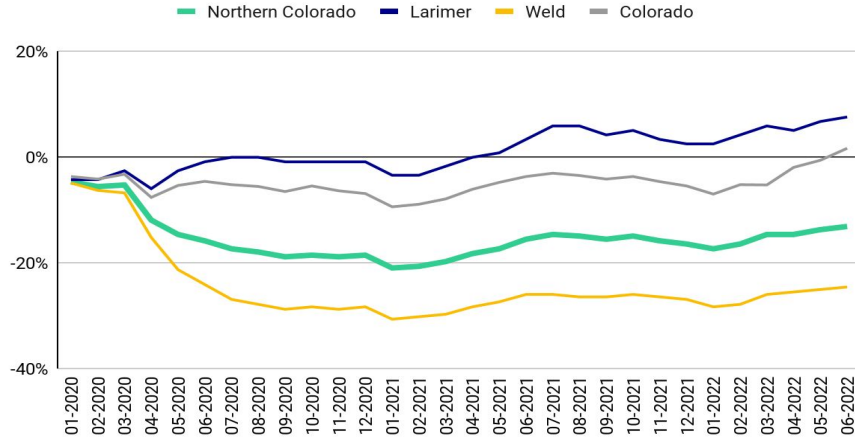
**Frequency:** monthly, 1-month delay

**Updated:** 08/03/2022

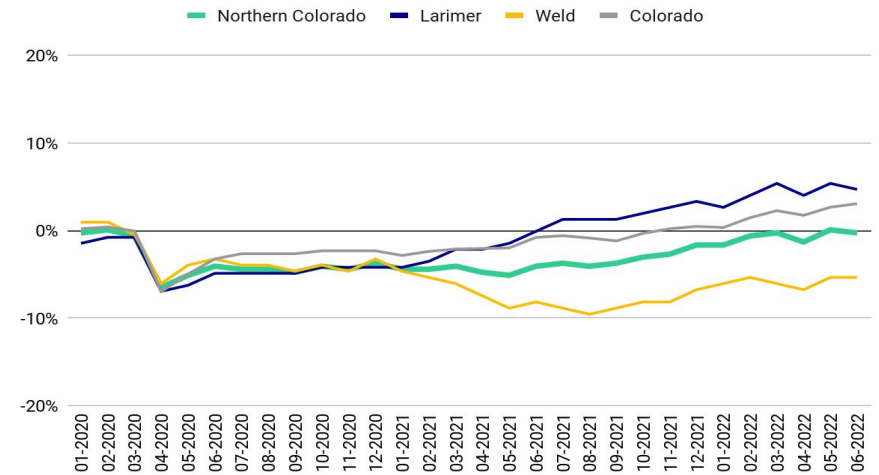


# EMPLOYMENT | Total Nonfarm Employment by Select Industry

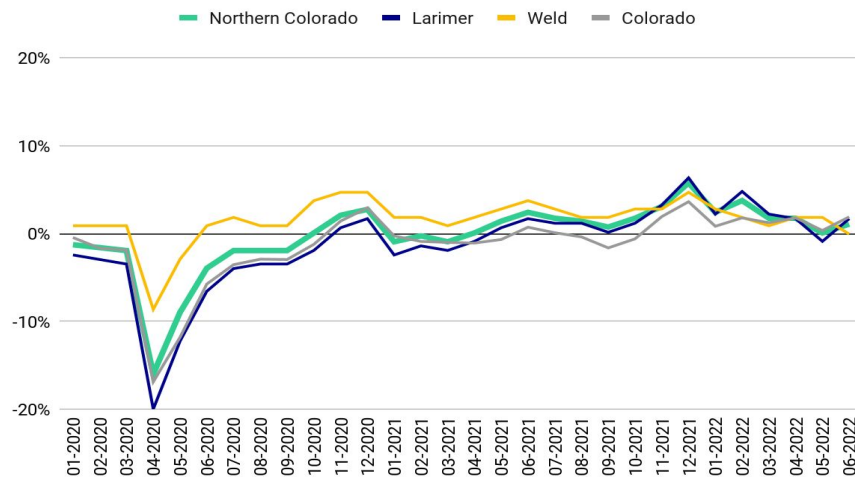
## Mining, Logging, and Construction: Percent Difference from 2019 Monthly Average



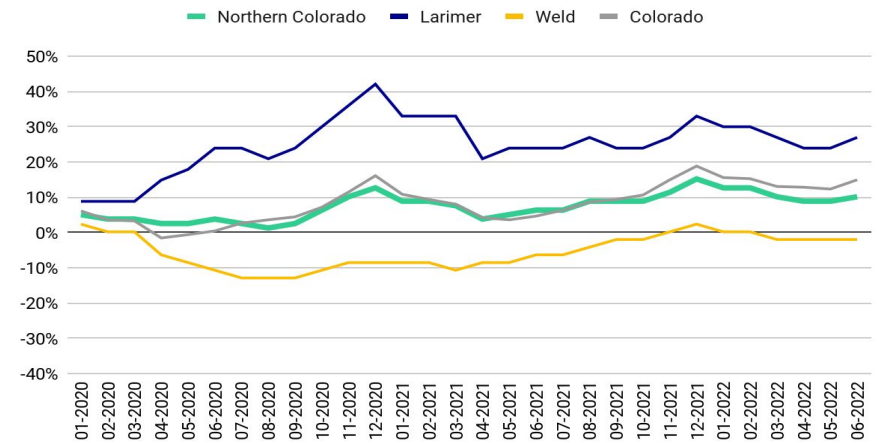
## Manufacturing: Percent Difference from 2019 Monthly Average



## Retail Trade: Percent Difference from 2019 Monthly Average

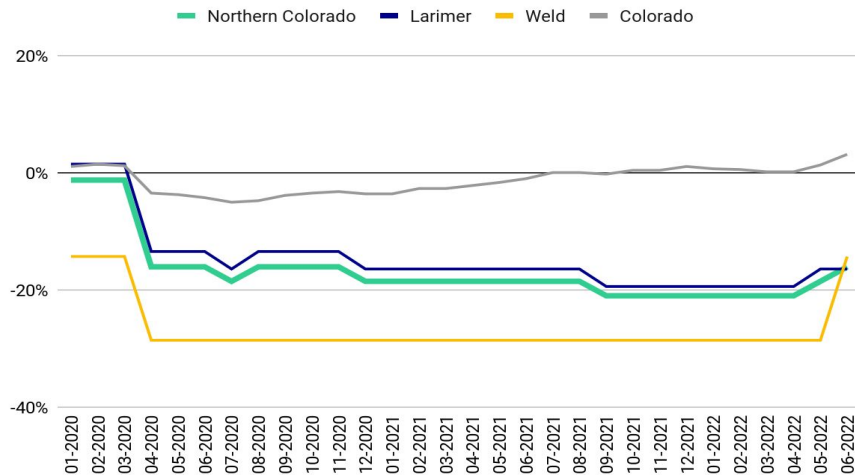


## Transportation, Warehousing, and Utilities: Percent Difference from 2019 Monthly Average

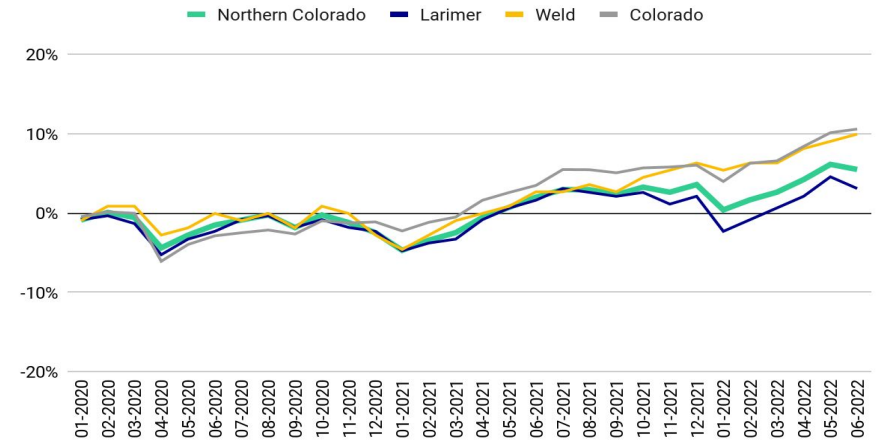


# EMPLOYMENT | Total Nonfarm Employment by Select Industry

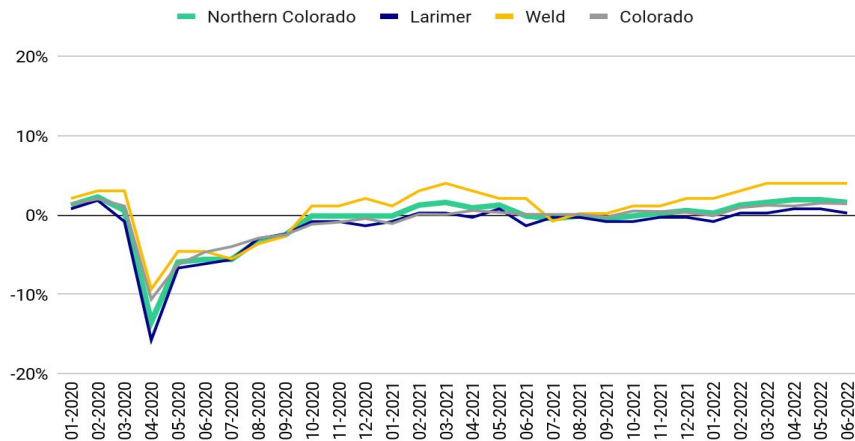
Information: Percent Difference from 2019 Monthly Average



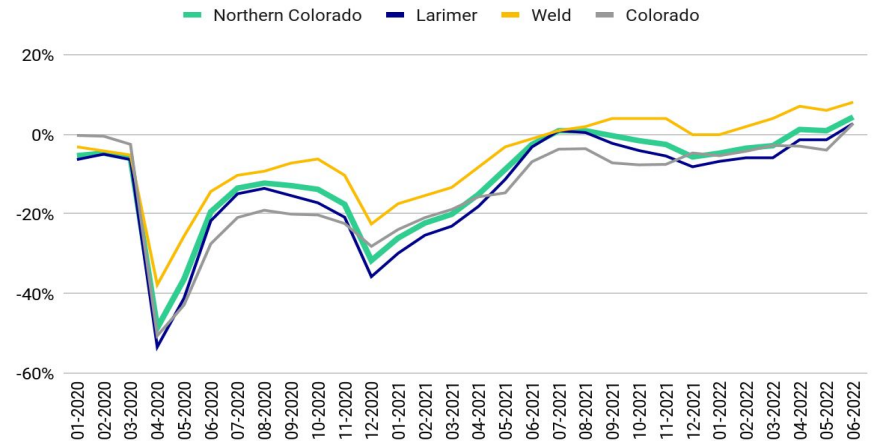
Professional and Business Services: Percent Difference from 2019 Monthly Average



Education and Health Services: Percent Difference from 2019 Monthly Average

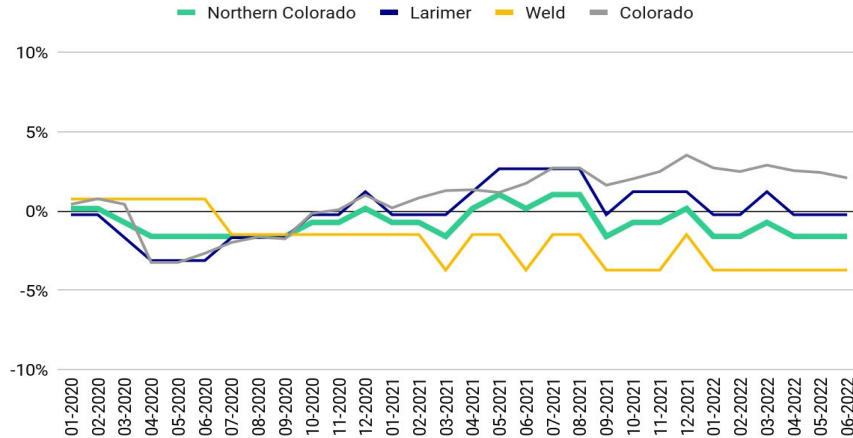


Leisure and Hospitality: Percent Difference from 2019 Monthly Average

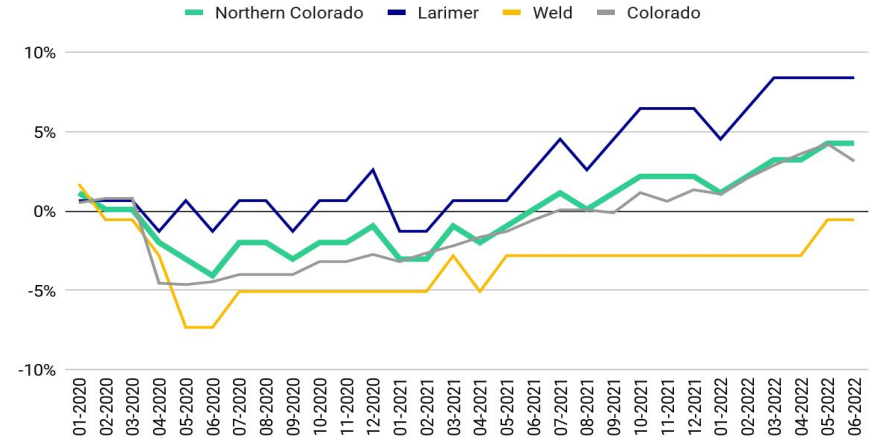


## EMPLOYMENT | Total Nonfarm Employment by Select Industry

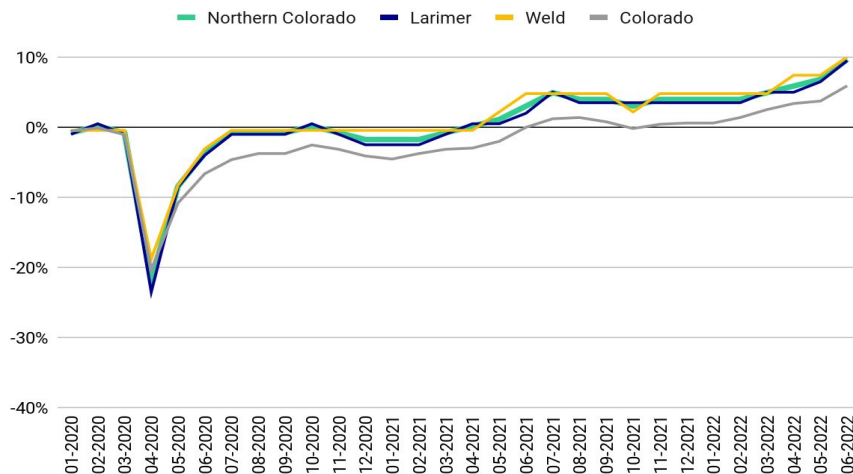
Financial Activities: Percent Difference from 2019 Monthly Average



Wholesale Trade: Percent Difference from 2019 Monthly Average



Other Services: Percent Difference from 2019 Monthly Average



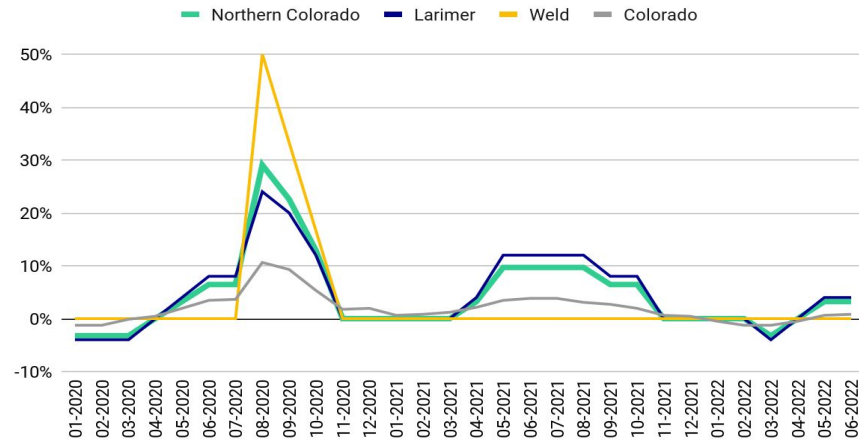
Source: US Bureau of Labor Statistics, Current Employment Statistics

Frequency: monthly, 1-month delay

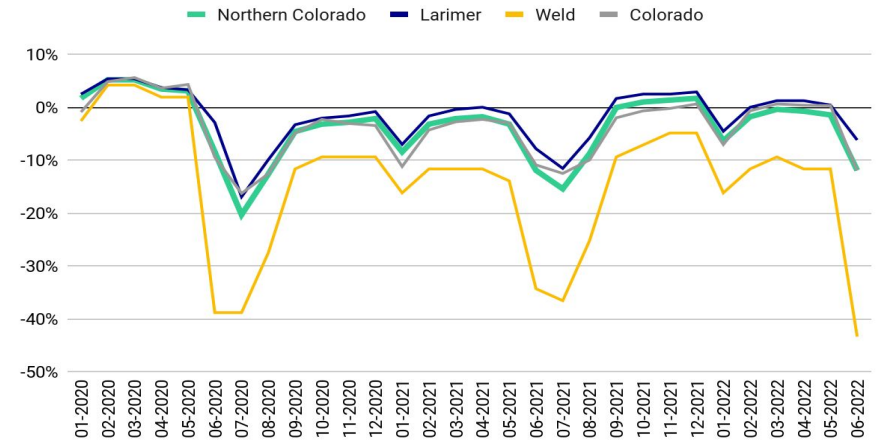
Updated: 08/03/2022

# EMPLOYMENT | Total Nonfarm Employment by Select Industry

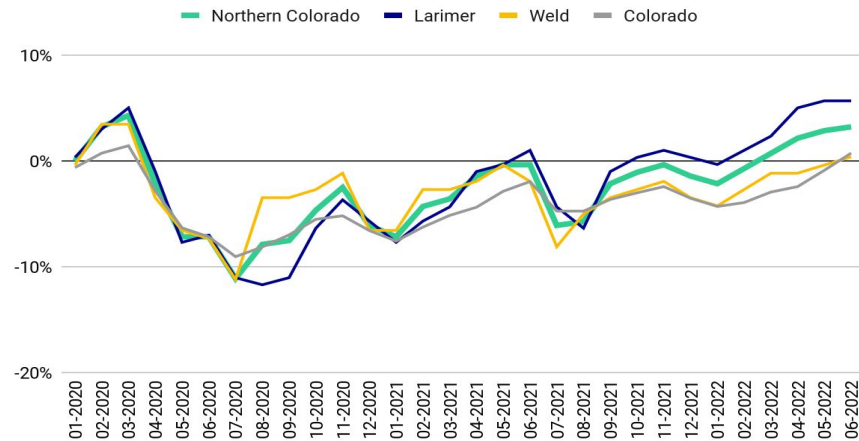
Federal Government: Percent Difference from 2019 Monthly Average



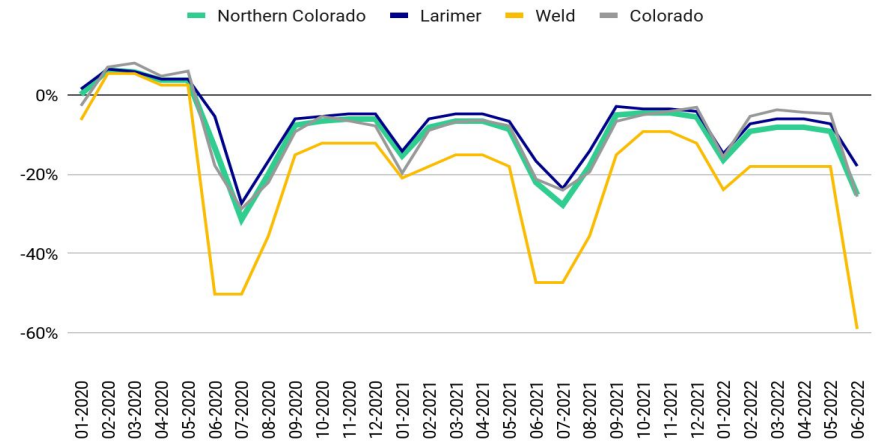
State Government: Percent Difference from 2019 Monthly Average



Local Government: Percent Difference from 2019 Monthly Average



State Government Educational Services: Percent Difference from 2019 Monthly Average



## EMPLOYMENT | Change in Nonfarm Employment by Industry, Feb 2020 to June 2022

	Northern Colorado		Larimer		Weld		Colorado	
Sector	#	%	#	%	#	%	#	%
<b>Total Nonfarm</b>	<b>-1,000</b>	<b>-0.3%</b>	<b>4,000</b>	<b>2.3%</b>	<b>-5,000</b>	<b>-4.4%</b>	<b>83,600</b>	<b>3.0%</b>
Leisure and Hospitality	2,900	9.5%	1,700	8.1%	1,200	12.8%	11,000	3.2%
Professional and Business Services	1,700	5.4%	700	3.4%	1,000	9.0%	45,800	10.4%
Other Services	1,000	9.5%	600	9.0%	400	10.5%	6,900	6.0%
Retail Trade	800	2.7%	900	4.8%	-100	-0.9%	9,700	3.6%
Transportation, Warehousing, and Utilities	500	6.1%	600	16.7%	-100	-2.2%	10,800	11.0%
Wholesale Trade	400	4.2%	400	7.7%	0	0.0%	2,600	2.3%
Federal Government	200	6.7%	200	8.3%	0	0.0%	1,100	2.1%
Local Government	0	0.0%	400	2.6%	-400	-3.0%	0	0.0%
Manufacturing	-100	-0.3%	800	5.5%	-900	-6.3%	4,000	2.6%
Education and Health Services	-200	-0.7%	-300	-1.6%	100	0.9%	-2,100	-0.6%
Financial Activities	-200	-1.8%	0	0.0%	-200	-4.4%	2,300	1.3%
Information	-600	-15.0%	-600	-17.6%	0	0.0%	1,300	1.7%
Mining, Logging and Construction	-2,500	-8.0%	1,400	12.4%	-3,900	-19.5%	12,100	6.1%
State Government	-4,900	-16.3%	-2,800	-11.0%	-2,100	-45.7%	-21,900	-16.0%
State Government Educational Services	-6,100	-29.6%	-3,900	-22.9%	-2,200	-61.1%	-25,800	-30.5%



## EMPLOYMENT | Average Hourly Earnings

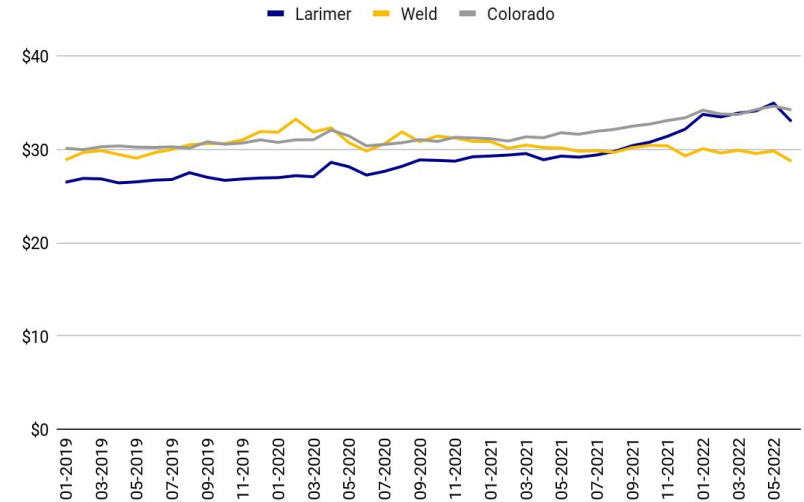
	CURRENT JUN 2022	COMPARISON TO 2019 AVERAGE	LOW	HIGH
Northern Colorado	n/a	n/a	n/a	n/a
Larimer	\$32.97	+23.1%	\$26.95 Jan 2020	\$34.93 May 2022
Weld	\$28.71	-4.6%	\$29.80 Jul 2020	\$33.22 Feb 2020

**What:** Average hourly earnings are collected as "gross" earnings per the average hours for which pay was received. Earnings include overtime and regular bonuses, but not benefits, irregular bonuses, or retroactive pay.

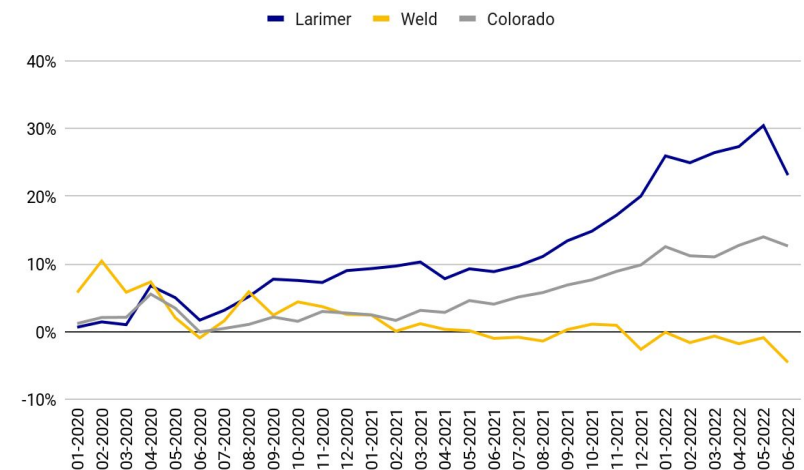
**Why:** They reflect changes in basic hourly and incentive wage rates as well as premium pay. They also reflect shifts in the number of employees between relatively high-paid and low-paid work.

**Summary:** The Pandemic-related recession has had a marked impact on the leisure and hospitality sector, which resulted in the shedding of many lower-wage jobs and a corresponding uptick in average hourly earnings. The re-opening of the economy in summer 2020 led to an adjustment in the average hourly earnings. Since that time, Larimer County has seen a significant uptick in average hourly earnings. Weld County has been on a mostly downward trajectory due to the loss of jobs in the Oil & Gas sector.

Average Hourly Earnings of All Employees



Average Hourly Earnings: Percent Difference from 2019 Monthly Average



**Source:** US Bureau of Labor Statistics, Current Employment Statistics

**Frequency:** monthly, 1-month delay

**Updated:** 08/03/2022

## SMALL & LOCAL BUSINESS | Bankruptcy Filings

**What:** The number of business and non-business cases filed in US Bankruptcy Courts measures the volume of bankruptcy filings in a 12-month period. The cases include those related to all chapters of the Bankruptcy Code – Chapter 7, Chapter 11, or Other.

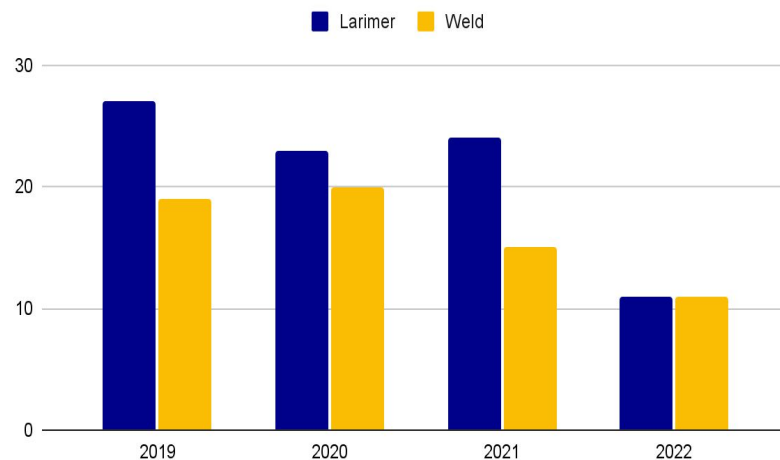
**Why:** Bankruptcies are a measure of financial distress.

**Summary:** In the 12 months ending June 30, both Larimer and Weld Counties saw temporary upticks in business bankruptcies during the Pandemic – in Larimer County the uptick was delayed until 2021; in Weld County the uptick was in 2020. In contrast, non-business bankruptcies declined during the Pandemic. In 2022, both counties saw declines in both business and non-business filing.

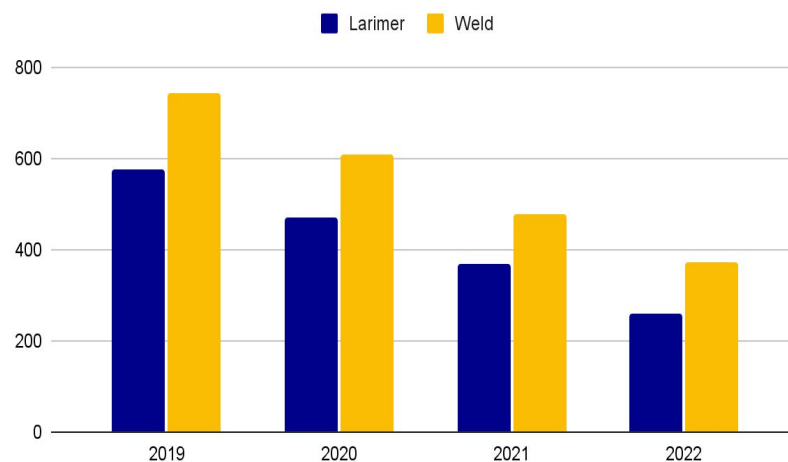
This likely indicates that the Pandemic supports helped individuals and some businesses weather the economic downturn. However, the uptick in business bankruptcies show that the supports may not have been enough.

As the Pandemic continues, it is yet to be seen if these supports will provide a long enough lifeline to help distressed individuals and businesses make it through the Pandemic and the ensuing economic uncertainty, especially now that many of the support programs are no longer available..

Business Bankruptcies: Cases Filed During the 12-Month Period Ending June 30



Non-Business Bankruptcies: Cases Filed During the 12-Month Period Ending June 30



Source: U.S. Bankruptcy Courts.

Frequency: quarterly, 3-month lag

Updated: 08/03/2022

## RETAIL & HOSPITALITY | Retail Sales

	CURRENT MAY 2022 (MILLIONS)	COMPARISON TO SAME MONTH IN 2019	LOW	HIGH
Northern Colorado	\$2,693.9	+31.5%	\$1,682.5 Apr 2020	\$3,828.0 Dec 2020
Larimer	\$1,309.3	+40.1%	\$806.2 Apr 2020	\$2,017.3 Dec 2020
Weld	\$1,384.6	+24.2%	\$858.2 Jan 2021	\$1,823.3 Dec 2021

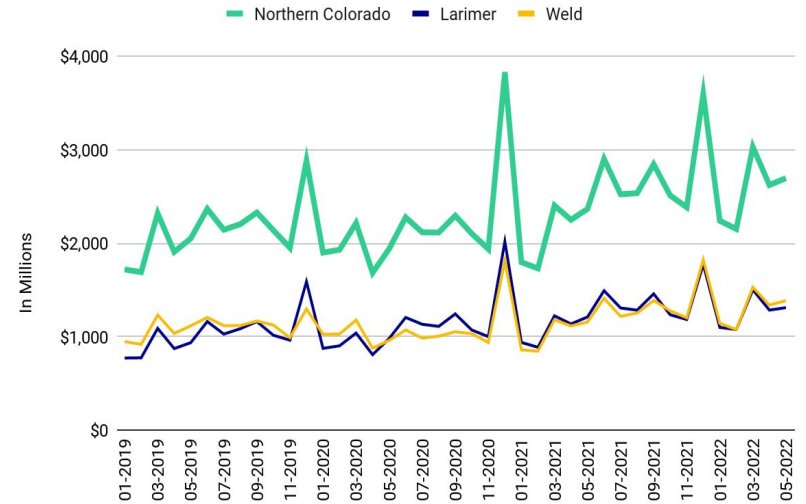
**What:** Retail sales are an indicator of consumer spending. As of 2019, retail sales are reported as of the location of the purchaser, which would include any online purchases shipped to locations in Larimer and Weld Counties.

**Why:** Consumer spending accounts for about 70% of the US economy; thus, retail sales can be an important indicator of the general health of an economy. In addition, local governments derive much of their tax revenue from retail sales. In this way, retail sales are an indicator of the health of the public sector.

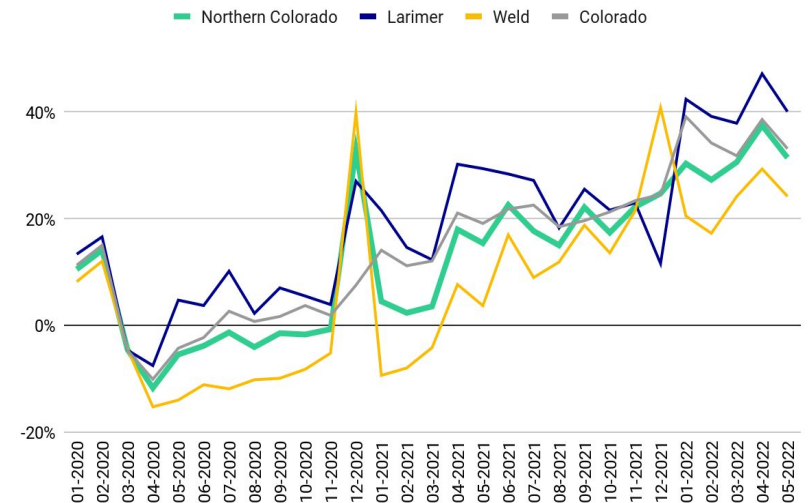
**Summary:** In Larimer County, retail sales bottomed out in April 2020 and have been above 2019 levels since June 2020. In Weld County, retail sales also bottomed out in April 2020 but remained lower than 2019 levels until April 2021, with the exception of December.

Currently, retail sales in both counties are well above 2019 levels.

### Retail Sales



### Retail Sales: Percent Difference from Same Month 2019



**Source:** Colorado Department of Revenue

**Frequency:** monthly, 2-month delay

**Updated:** 08/03/2022

## RETAIL & HOSPITALITY | Retail Sales by Select Industry

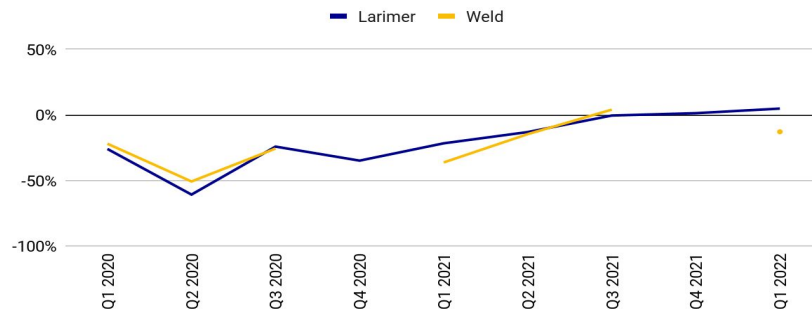
	CURRENT Q1 2022 (MILLIONS)	COMPARISON TO Q1 2019	LOW	HIGH
<b>Larimer:</b>				
Arts	\$19.9	+4.8%	-60.8%	+4.8%
Clothing	\$59.8	+14.5%	-41.9%	+14.5%
Food Svcs	\$218.3	+14.4%	-36.5%	+14.4%
<b>Weld:</b>				
Arts	\$6.1	-12.9%	-50.8%	+4.0%
Clothing	\$29.1	+42.5%	-8.9%	+42.5%
Food Svcs	\$123.0	+16.0%	-20.8%	+18.0%

**What:** Retail sales are an indicator of consumer spending as well as an indicator of business revenues. In this capacity, retail sales can reflect the health of businesses.

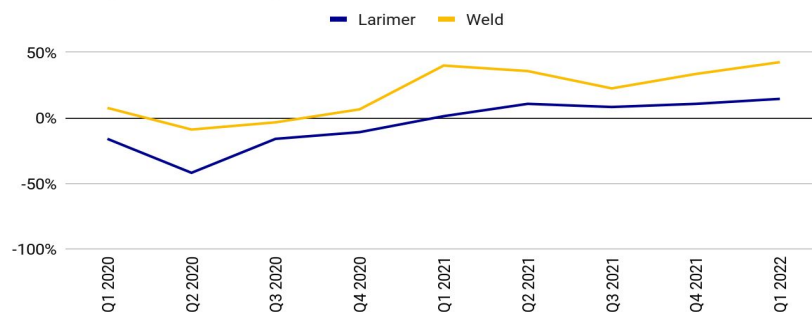
**Why:** These three industries were selected because many consumer-oriented, locally-owned businesses are in these sectors.

**Summary:** All three sectors were particularly hard hit in the second quarter 2020 when stay-at-home orders were in effect and business capacity was severely limited. Arts, entertainment, and recreation sales were the most negatively impacted by COVID and was the slowest to recover. Clothing and clothing accessories and food services have been more resilient and surpassed 2019 levels in both counties by the second quarter of 2021.

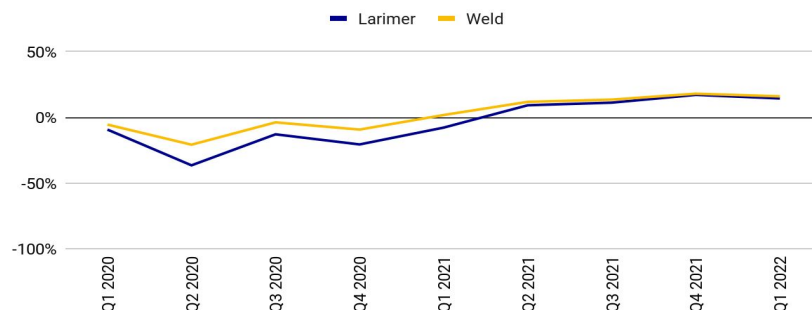
Retail Sales: Comparison vs Same Quarter 2019  
Arts, Entertainment, and Recreation



Retail Sales: Comparison vs Same Quarter 2019  
Clothing and Clothing Accessories



Retail Sales: Comparison vs Same Quarter 2019  
Food Services and Drinking Places



**Source:** Colorado Department of Revenue

**Frequency:** quarterly, 2-month delay

**Updated:** 06/05/2022

## RETAIL & HOSPITALITY | Community Mobility

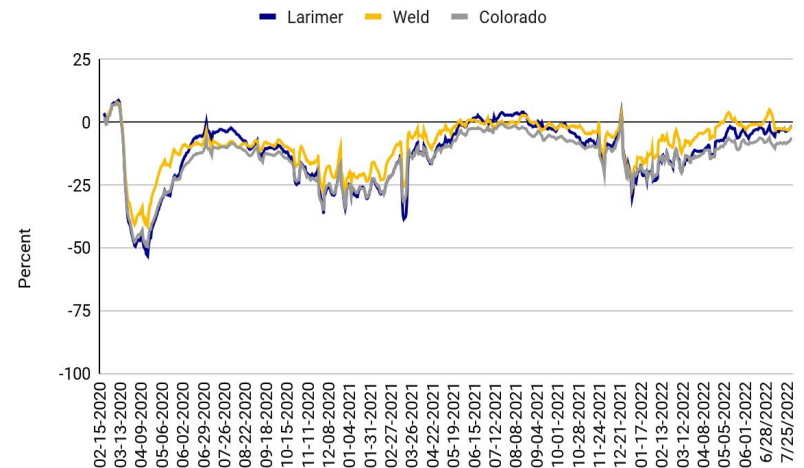
	CURRENT (JUL 31, 2022) COMPARISON TO JAN 2020 BASELINE	LOW	HIGH
<b>Larimer:</b>			
Retail & Rec	-2%	-53%	+9%
Workplace	-26%	-53%	+4%
<b>Weld:</b>			
Retail & Rec	-2%	-42%	+8%
Workplace	-16%	-46%	+5%

**What:** Google's community mobility tracks aggregated, anonymized data to provide insights into movement trends. It shows the percent difference from the January 2020 baseline.

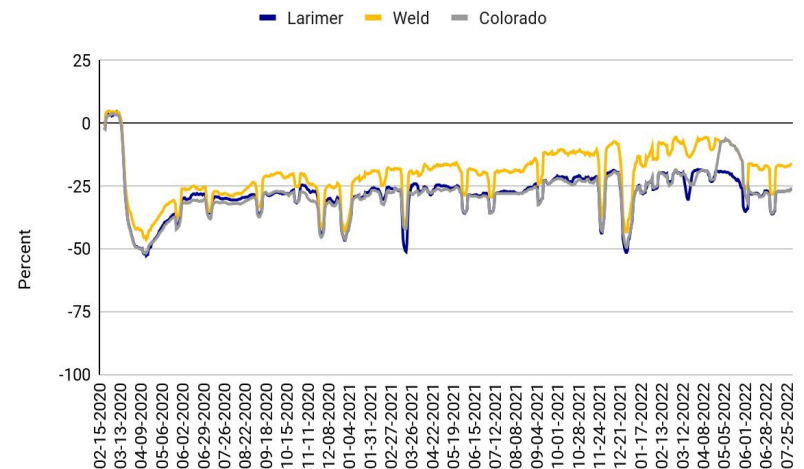
**Why:** Policies and individual responses related to the Pandemic greatly influence people's movement and spending. People's visits to retail and recreation destination and the workplace provide insights into the flow of customers and workers.

**Summary:** Community mobility dropped by as much as 50 percent during the April stay-at-home order. Mobility has recovered to retail and recreation places, but for workplaces, it is significantly lower than baseline levels in Larimer County but is closer to recovery in Weld County.

Community Mobility, Retail & Recreation: 7-day Average Comparison to Baseline



Community Mobility, Workplace: 7-day Average Comparison to Baseline



Source: Google  
Frequency: daily  
Updated: 08/03/2022



## RETAIL & HOSPITALITY | Hotel Occupancy

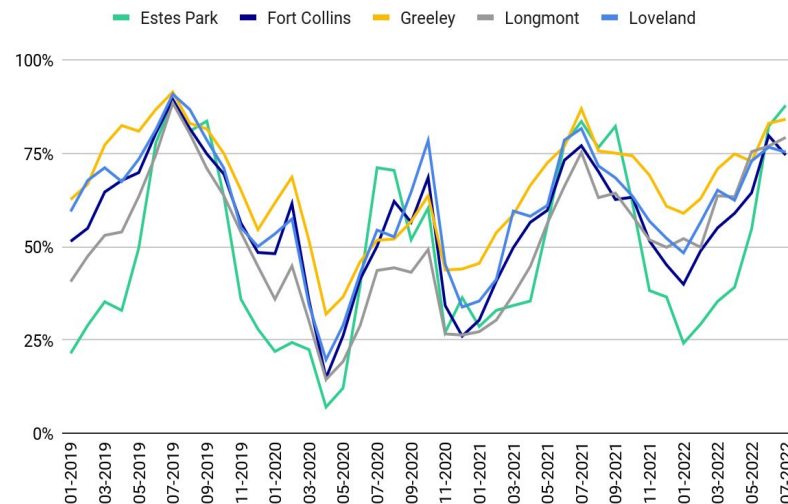
	CURRENT JUL 2022	COMPARISON TO SAME MONTH IN 2019	LOW	HIGH
Estes Park	87.8%	-1.5%	7.0% Apr 2020	87.8% Jul 2022
Fort Collins	74.5%	-16.7%	14.8% Apr 2020	77.0% Jul 2021
Greeley	84.1%	-8.0%	31.9% Apr 2020	86.9% Jul 2021
Longmont	79.2%	-10.4%	14.4% Apr 2020	79.2% Jul 2022
Loveland	75.3%	-17.1%	19.7% Apr 2020	81.6% Jul 2021

**What:** The hotel occupancy shows the percent of open hotel rooms that are occupied.

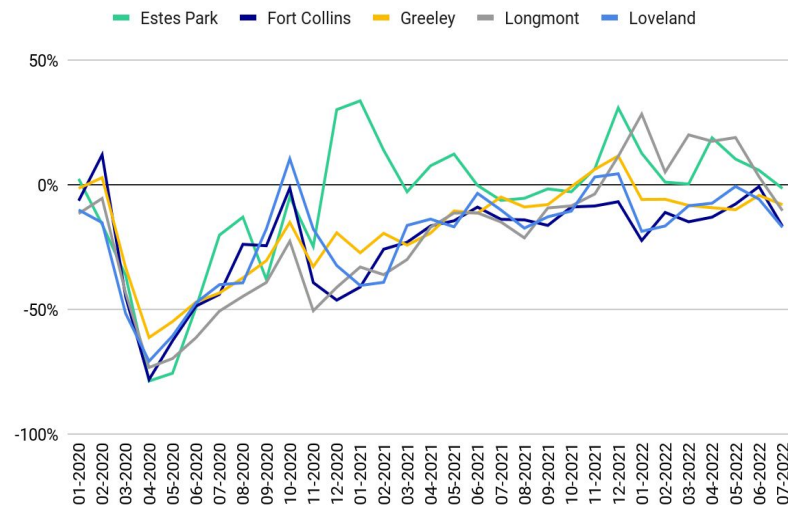
**Why:** The hotel occupancy rate is an indicator of the performance of the hospitality sector. It shows capacity utilization and reflects the visitation level to these destinations. The hospitality sector, a major employment sector, also generates visitor spending which supports other sectors.

**Summary:** The hotel occupancy rate declined dramatically in April 2020 in all the Northern Colorado markets. Estes Park and Longmont have since experienced fairly strong performance while the other markets experienced more gradual progress toward recovery.

### Hotel Occupancy



### Hotel Occupancy: Percent Difference from Same Month 2019



## RETAIL & HOSPITALITY | Revenue per Available Room

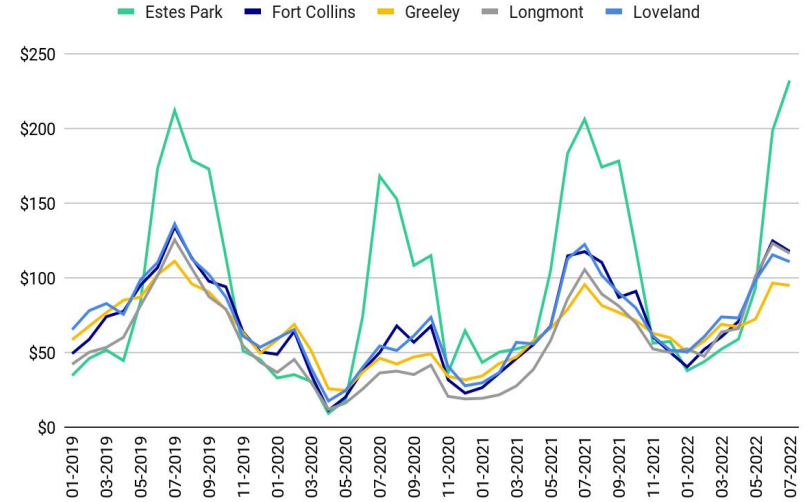
	CURRENT JUL 2022	COMPARISON TO SAME MONTH IN 2019	LOW	HIGH
Estes Park	\$232.12	+9.4%	\$9.31 Apr 2020	\$232.12 Jul 2022
Fort Collins	\$117.74	-12.2%	\$11.32 Apr 2020	\$117.74 Jul 2022
Greeley	\$94.94	-14.6%	\$24.67 May 2020	\$94.94 Jul 2022
Longmont	\$116.50	-7.2%	\$11.91 Apr 2020	\$116.50 Jul 2022
Loveland	\$110.82	-18.6%	\$17.56 Apr 2020	\$110.82 Jul 2022

**What:** Revenue per Available Room (RevPAR) is another key performance indicator of the hospitality industry that is calculated by multiplying the average daily room rate by the occupancy rate.

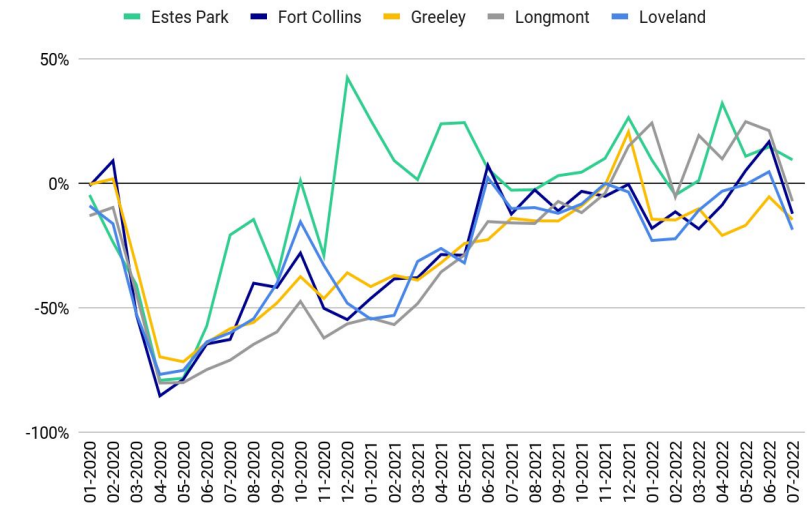
**Why:** RevPAR is an indicator of profitability in the hospitality sector.

**Summary:** All of the five regional markets saw extreme drops in RevPAR in April. With the exception of Estes Park, the markets saw gradual improvement reaching seasonal peaks each summer. Estes Park, however, saw a strong improvement in the summer of 2020 and experienced an exceptional winter and spring season before heading back to 2019 levels in the summer of 2021.

RevPAR



RevPAR: Percent Difference from Same Month 2019



**Source:** Rocky Mountain Lodging Report, Colorado Hotel and Lodging Association

**Frequency:** monthly, 1-month delay

**Updated:** 08/19/2022

## RETAIL & HOSPITALITY | Visitors to Rocky Mountain National Park

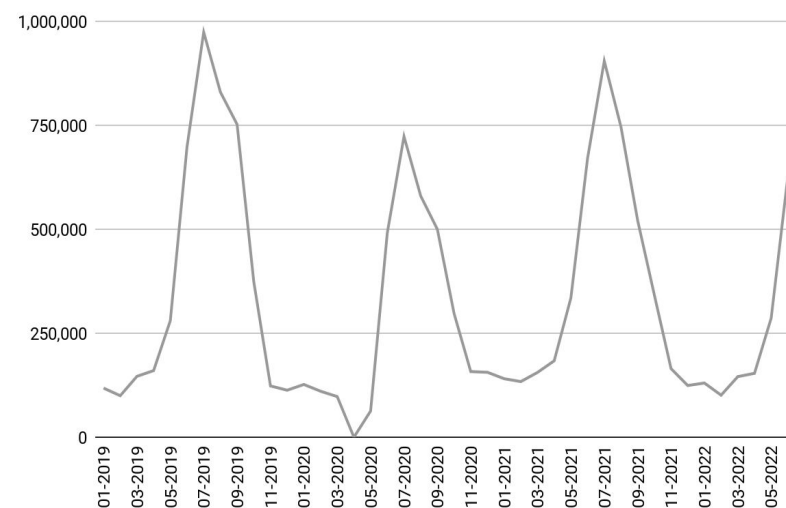
	CURRENT JUN 2022	COMPARISON TO SAME MONTH IN 2019	LOW	HIGH
Recreation Visitors	627,860	-10.1%	0 Apr 2020	904,767 Jul 2021

**What:** Monthly recreation visitors to Rocky Mountain National Park is the number of individuals that enter the park for recreational purposes.

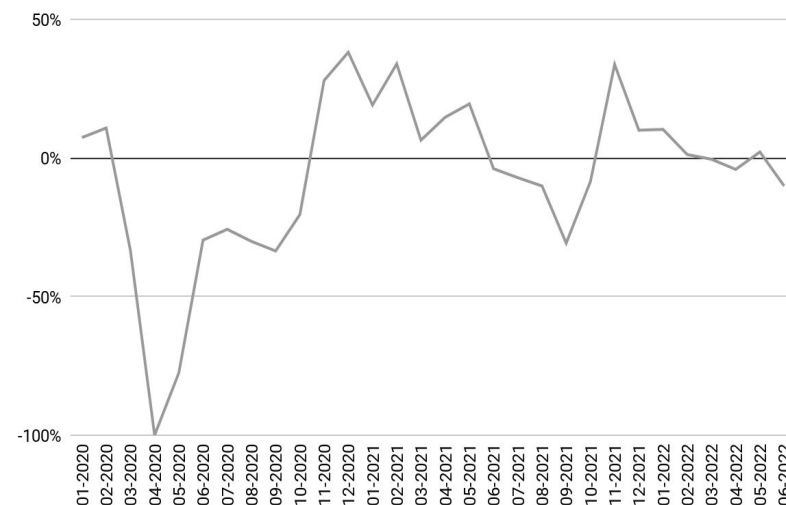
**Why:** The number of monthly recreation visitors is an indicator of the health of the tourism sector in the region as it captures the visitors to one of the largest tourist destinations in Northern Colorado.

**Summary:** Rocky Mountain National Park closed completely at the beginning of the Pandemic but opened back up for the summer tourism season. However, visitation over the summer and fall remained about 30 percent below 2019 levels due to the reservation system that limited visitation to the park. Although the East Troublesome and Cameron Peak Fires impacted the park significantly in October and November 2020, visitation was 38 percent higher in December 2020 than it was in December 2019 and continued to be elevated through spring 2021. The reservation system was back in place in 2021 and 2022 from June to October, which held the number of visitors to lower-than-average levels.

Visitors to Rocky Mountain National Park



Visitors: Percent Difference from Same Month 2019



Source: National Park Service

Frequency: monthly, 1-month delay

Updated: 08/03/2022

## REAL ESTATE & CONSTRUCTION | Median Home Price

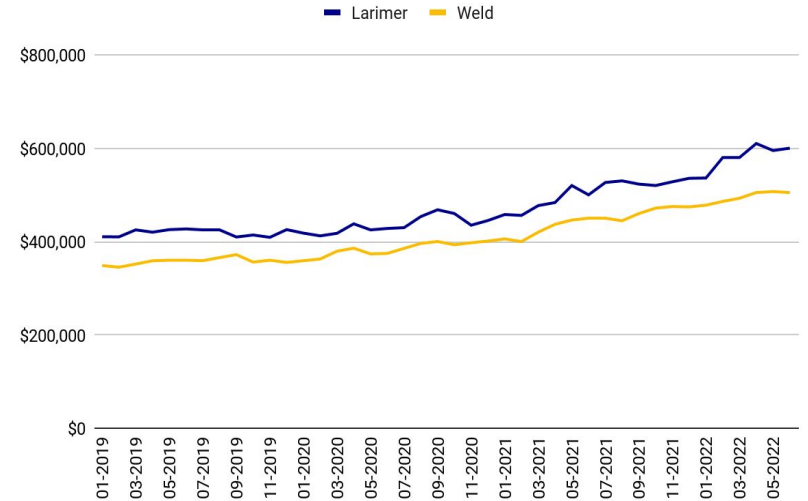
	CURRENT JUN 2022	COMPARISON TO SAME MONTH IN 2019	LOW	HIGH
Northern Colorado	n/a	n/a	n/a	n/a
Larimer	\$600,000	+40.2%	\$412,155 Feb 2020	\$595,000 May 2022
Weld	\$504,898	+34.8%	\$358,900 Jan 2020	\$507,036 May 2022

**What:** The median price is where half homes sold for more and half homes sold for less.

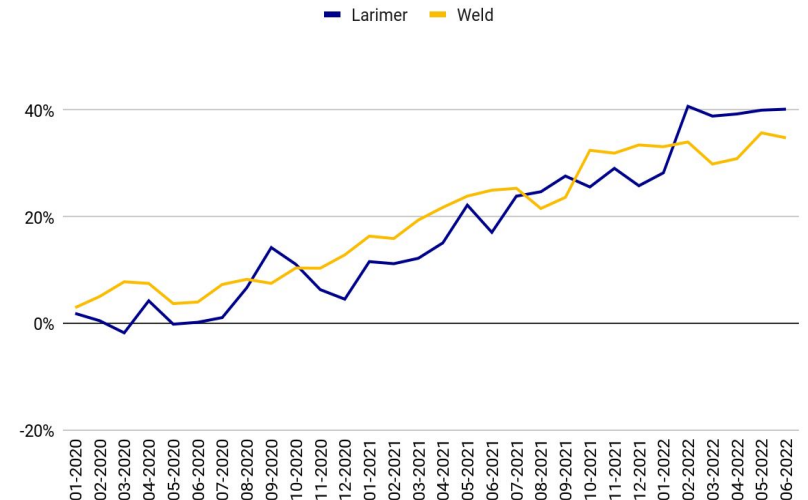
**Why:** The median home price is a good indicator of the conditions of the residential real estate market as well as housing affordability.

**Summary:** In spite of the Pandemic, the residential real estate market has continued to be strong. In both counties, the median home price has continued to be on an upward trajectory. Though there has been quite a bit of variability, particularly in Larimer County, the median home prices are more than 30 percent higher than the same month in 2019.

Single Family Median Home Price



Median Home Price: Percent Difference from Same Month 2019



## REAL ESTATE & CONSTRUCTION | Commercial Vacancy Rates

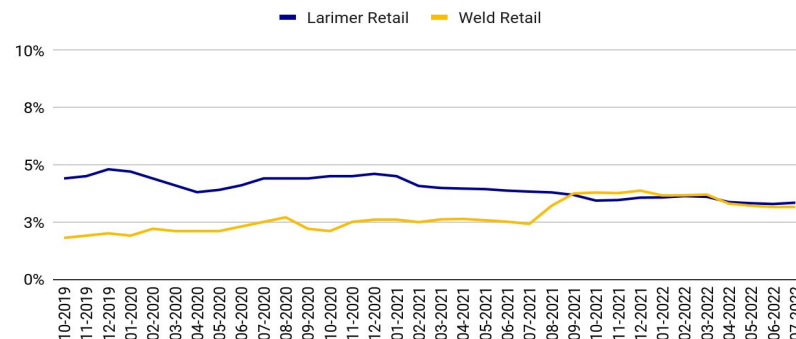
	CURRENT JUL 2022	COMPARISON TO FEB 2020 MONTHLY AVERAGE	LOW	HIGH
<b>Larimer:</b>				
Retail	3.3%	-24.1%	3.8%	4.7%
Office	5.1%	+11.8%	4.5%	7.9%
Industrial	4.3%	+78.3%	2.2%	4.5%
<b>Weld:</b>				
Retail	3.2%	+43.3%	1.9%	3.9%
Office	7.0%	+139.7%	2.6%	7.0%
Industrial	3.7%	+42.9%	2.3%	4.3%

**What:** The average monthly vacancy rate is the average of the daily vacancy rate, which is the amount of space vacant divided by the rentable building area.

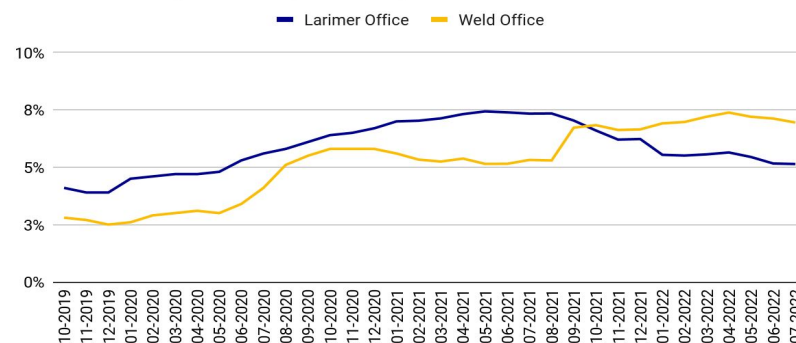
**Why:** Commercial vacancy rates are indicators of conditions of the commercial real estate market. Changes in the vacancy rate can reflect changes in the region's rentable building area or changes in the amount of space being leased.

**Summary:** The average monthly vacancy rate for retail were the most stable in both counties until a recent uptick of the retail vacancy rate in Weld County. The office and industrial rates in both have increased dramatically during the Pandemic and have remained elevated. Larimer office vacancy has been declining since mid 2021.

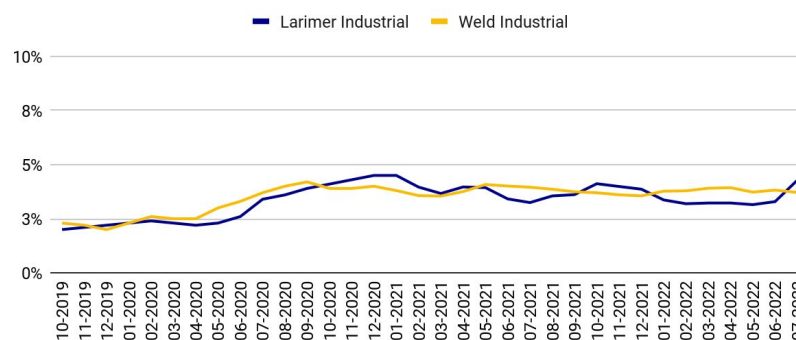
### Retail Average Monthly Vacancy Rate



### Office Average Monthly Vacancy Rate



### Industrial Average Monthly Vacancy Rate



Source: CoStar

Frequency: daily, no delay

Updated: 08/23/2022



## REAL ESTATE & CONSTRUCTION | Building Material Use Tax

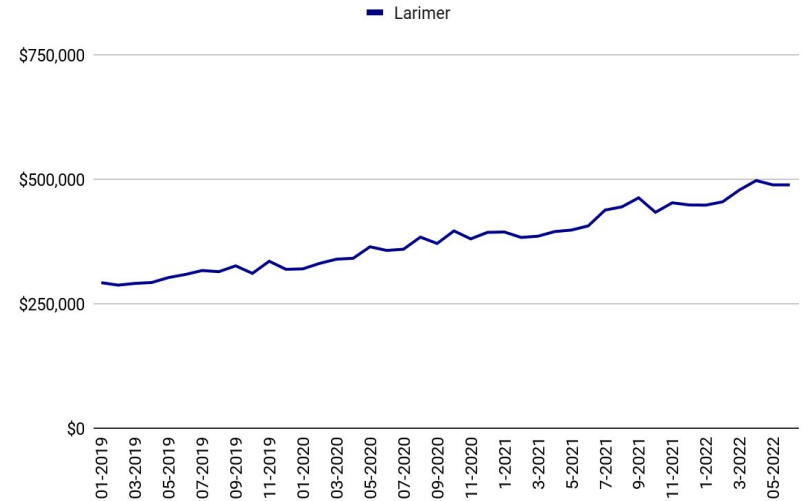
	CURRENT JUL 2022	COMPARISON TO SAME MONTH IN 2019	LOW	HIGH
Larimer	475,699	+50.2%	\$320,110 Jan 2020	\$488,727 MAY 2022

**What:** Larimer County collects an estimated deposit of building material use tax at the time a building permit is issued. It is a prepayment of sales tax on building material used for a permitted project and is reconciled upon completion of the project. The 12-month moving average provides a smoothed trend line to better gauge general directional change.

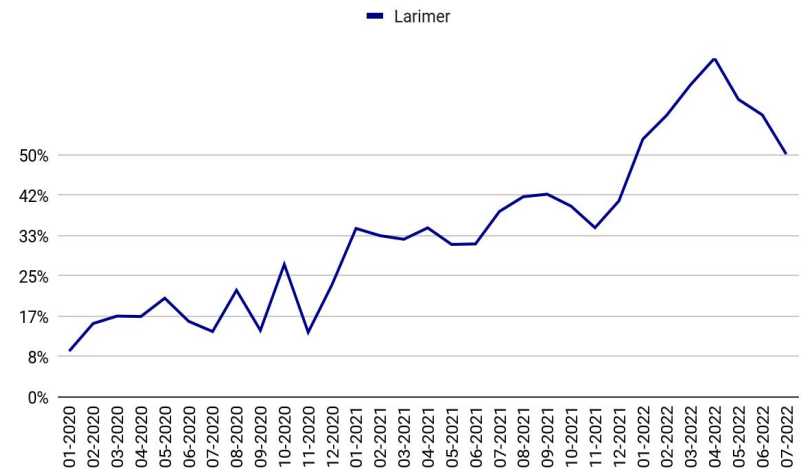
**Why:** Building permits and building material purchases are important indicators of the health of the construction industry.

**Summary:** The 12-month average for the building materials use tax has been steadily climbing. Even during the pandemic, 2020 levels are more than 10 percent higher than the 2019 12-month moving average. By April 2022, the 12-month average was more than 70 percent higher than the average in April 2019. While this is a reflection of the level of activity, it also encompasses the growth in the prices of construction materials.

Building Materials Use Tax: 12-Month Moving Average



Building Materials Use Tax: Percent Difference from Same Month 2019



Source: Larimer County

Frequency: monthly, no delay

Updated: 08/03/2022